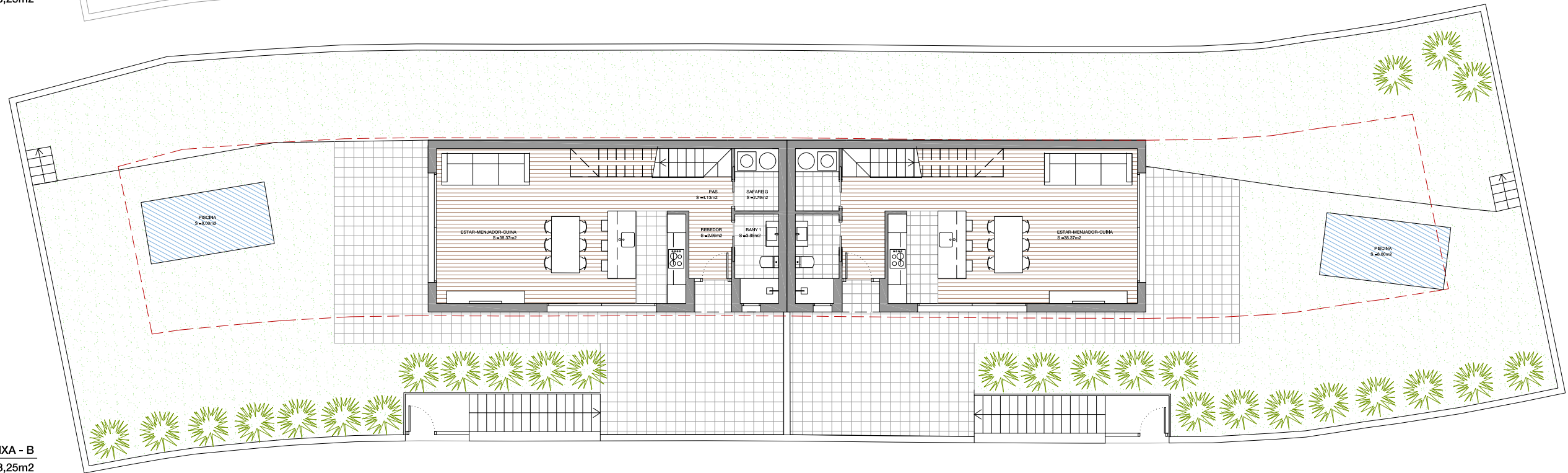


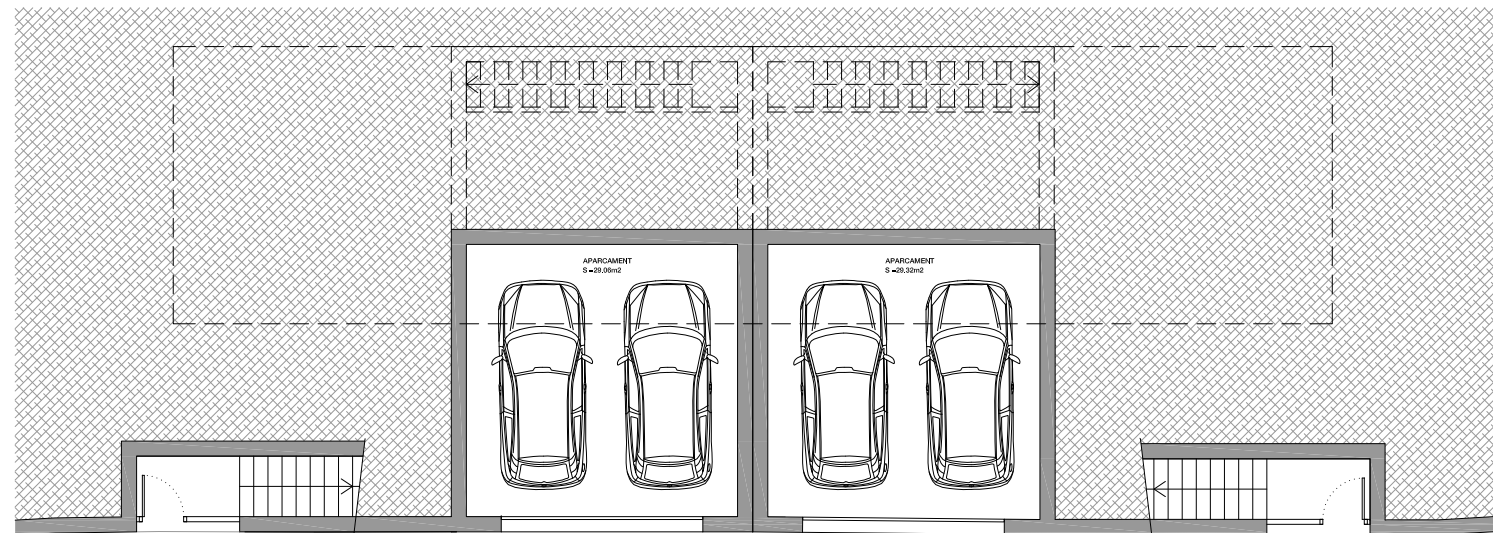
PIS PRIMER - B
S. cons. = 63,25m²

PIS PRIMER - A
S. cons. = 63,25m²



PLANTA BAIXA - B
S. cons. = 63,25m²

SOTERRANI - A
S. cons. = 63,25m²



PLANTA BAIXA - B
S. cons. = 36,00m²

SOTERRANI - A
S. cons. = 36,00m²